

SPC3U02, Universal Control Unit

The SPC3U02 is a user-friendly Controller housed in a 3RU chassis featuring a 7 inch touch display for front panel control.

The Controller is capable of operating with up to 3 amplifiers along with 4 switches.

The intuitive user interface provides easy configuration of a Single or Redundant 1:1, 1:2 and 1+1 Phase Combined configurations.

Air to Load and Polarity Switching combinations can also be accommodated.

A Beacon Receiver Input facilitates Uplink Power Control (UPC) of the Amplifiers which when enabled provides automatic control of the Uplink Power for associated weather conditions.



FEATURES

- 7" Touch screen display for easy monitor and control visibility status of up to three HPAs and four switches.
- Dual Ethernet interface provides local and remote communication.
- Dual redundant power supplies
- The Controller Touch Screen front panel can be locked with a User Login to restrict access.
- Communications between the Controller and Amplifiers is provided via a single cross site Ethernet connection directly to the Spacepath Universal Interface Enclosure.
- New Web GUI replicates the front panel control and provides clear indication of the Amplifier status and RF switch routing.
- A Beacon Receiver Input facilitates Uplink Power Control (UPC) of the Amplifiers which when enabled provides automatic control of the Uplink Power for associated weather conditions.

SPECIFICATION

Electrical

Voltage	90 to 264 VAC
Frequency	47 to 63 Hz
Power requirement.....	25 W nom
Power factor	0.96 min
Input surge current	100 A max at 230 VAC

Mechanical

Weight.....	<2kg
Dimensions:	
width	483 mm (19inches)
height.....	3U, 132 mm (5.1 inches)
Depth	256 mm (10 inches)
Cooling	Natural

Environmental

For operation outside these parameters, refer to SpacePath Communications for guidance.	
Operating temperature.....	- 20°C to +40°C
Storage temperature	- 40°C to +70°C
Relative Humidity (non-condensing).....	95%
Vibration	BS EN 60068-2-64 test Fh, Transportation
Shock.....	IEC Publication 68-2-27 Part 2 Test Ea 25 g

Connectors

Prime Power (2 off)	IEC C14
Beacon Receiver Interface	D-Sub 9-pin plug
Ethernet (2 off).....	RJ-45 Socket

Regulatory

EMC.....	EMC Directive 2014/108/EU and FCC Part 15
Safety	Low Voltage Directive 73/23/EEC BS EN 60950
RoHs	RoHS Directive 2011/65/EU

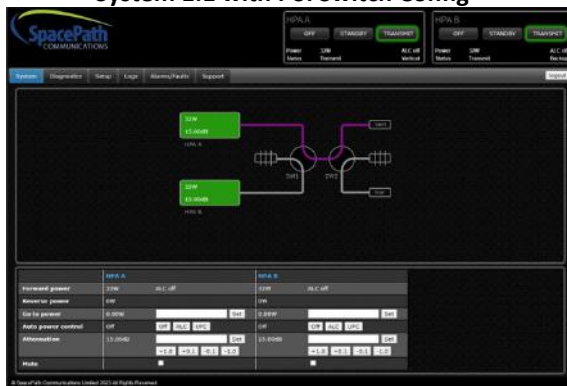
CONTROLS/DISPLAY
7" Touch Screen

FRONT PANEL INDICATORS
Power Supply #1/#2 OK



Web Browser

System 1:1 with Pol Switch Config



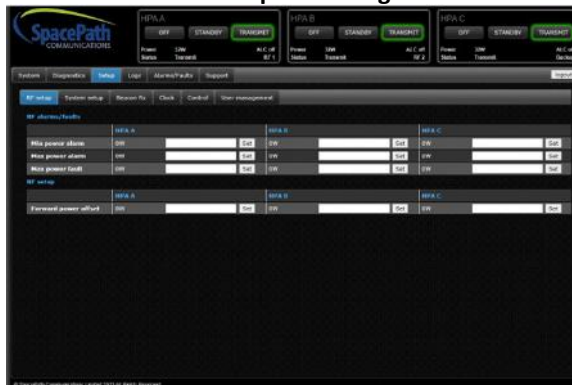
System 1:2 Config



Diagnostics 1:2 Config



RF Setup 1:2 Config



System Setup 1:2 Config



Beacon Setup 1:2 Config

